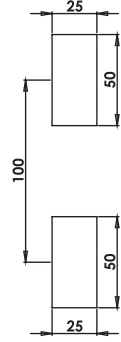


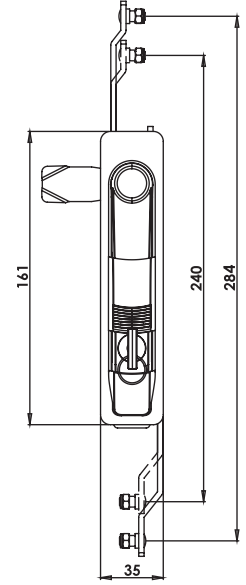
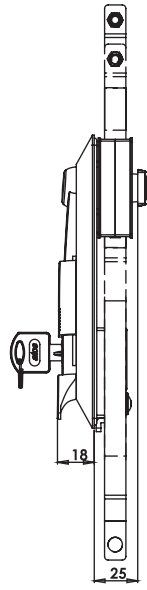
KI02

IP65

**KOLLU PANO KİLİDİ 02
SWING HANDLE 02**



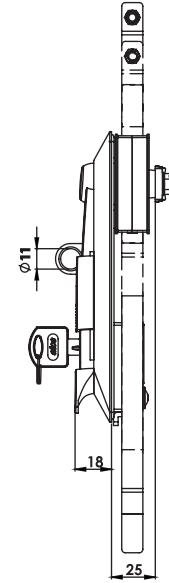
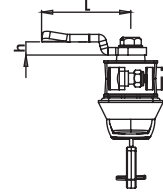
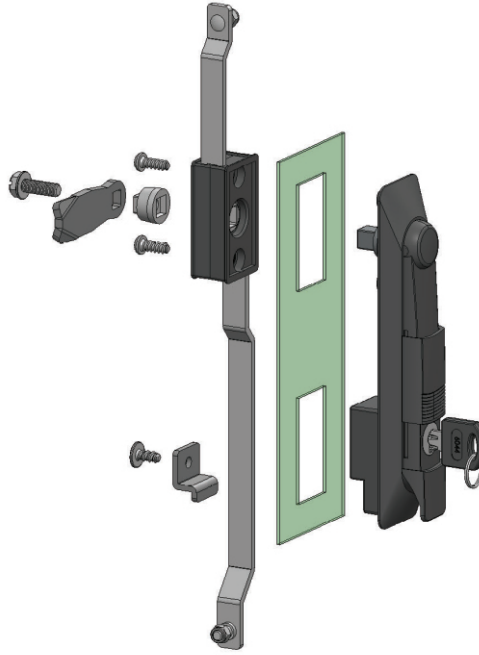
Geçiş Ölçüsü
Cut Out



KI12

IP65

**KOLLU PANO KİLİDİ 12 (Asma Kilit Hamili)
SWING HANDLE 12 (For Padlock)**



Kullanım Alanları

- * Elektrik Panoları
- * Makina Kapakları
- * Bilgisayar Kabinleri

Malzeme

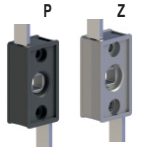
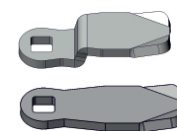
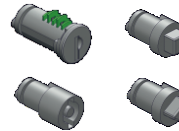
- * Gövde: Polyamide
DIN-EN ISO 1043-1 PA6 GFR30
- * Kol : Polyamide
DIN-EN ISO 1043-1 PA6 GFR30
- * P: Mekanizma:Polyamide
DIN-EN ISO 1043-1 PA6 GFR30
- * Z: Mekanizma:Zamak
DIN-EN 1774-ZnAl4Cu1
- * Dil (CC):Çelik veya Plastik /
- * Conta : Poliüretan
- * Asma Kilit Hamili : Zamak
DIN-EN 1774-ZnAl4Cu1

Applications

- * Electric Panels
- * Machinery Covers
- * Rack Cabinets

Material

- * Body: Polyamide
DIN-EN ISO 1043-1 PA6 GFR30
- * Handle: Polyamide
DIN-EN ISO 1043-1 PA6 GFR30
- * P: Mechanism:Polyamide
DIN-EN ISO 1043-1 PA6 GFR30
- * Z: Mechanism:Zamak
DIN-EN 1774-ZnAl4Cu1
- * Cam (CC): Steel or Pa6
- * Seal: Polyurethane
- * Padlock :Zamak
DIN-EN 1774-ZnAl4Cu1



Grup Kodu	Fişe-Göbek Kodu	Dil Kodu	Mekanizma
Group Code	Cylinder-Driver Code	Cam Code	Mechanism
KI02	.DD Fişeler - Göbekler için Sayfa: 2 - Tablo: A/B	.CC Diller için Sayfa:1 - Tablo: 1	.M
KI12	For cylinders - drivers please check Page: 2 - Table: A/B	For cams please check Page:1 - Table: 1	Z: Zamak P: Plastik / Polyamide