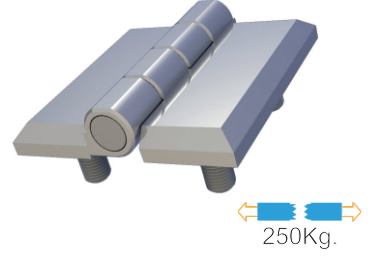


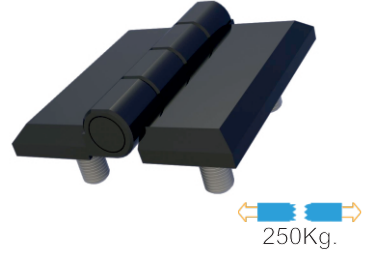
MY5050.1.2.1

YAPRAK MENTEŞE (50*50mm-Krom Kaplı.-Civatalı)
LEAF HINGE (50*50mm-Chrome Plated-With Bolt)



MY5050.1.5.1

YAPRAK MENTEŞE (50*50mm-Boyalı-Civatalı)
LEAF HINGE (50*50mm-Black Coated-With Bolt)



MY5050.35.0.1

YAPRAK MENTEŞE (50*50mm-Plastik-Civatalı)
LEAF HINGE (50*50mm-Polyamide-With Bolt)



Kullanım Alanları

- * Elektrik Panoları
- * Makine Kapakları

Malzeme

- * 1: Gövde Zamak
DIN-EN 1774-ZnAl4Cu1
- * 35: Gövde : Polyamide DIN-EN ISO
1043-1 PA6 GFR30
- * Civata: Çelik St 37
- * Pim :Çelik St 37
- * 2: Kaplama: Krom
- * 5: Kaplama: Boyalı
- * 0: Kaplama: Kaplamsız
- * Menteşe Dönme Açısı: 180 °

Applications

- * Electric Panels
- * Machinery Covers

Material

- * 1: Body: Zamak
DIN-EN 1774-ZnAl4Cu1
- * 35: Body: Polyamide DIN-EN ISO
1043-1 PA6 GFR30
- * Screw: Steel St 37
- * Pin : Steel St 37
- * 2: Finish: Chrome
- * 5: Finish: Black Coated
- * 0: Uncoated
- * Hinge Rotation Angle: 180 °