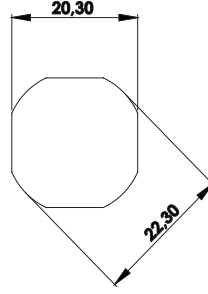
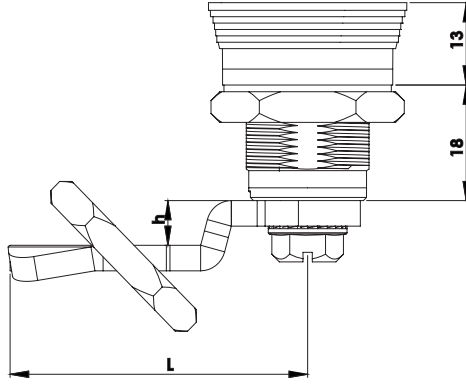
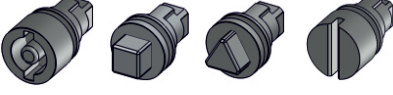


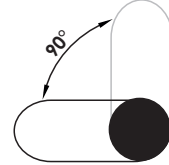
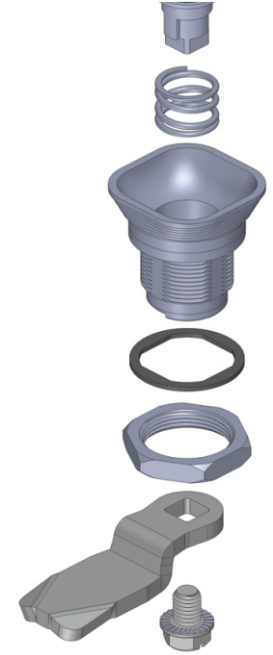
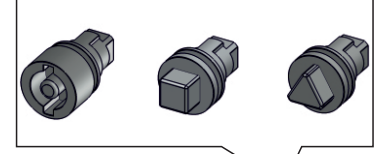
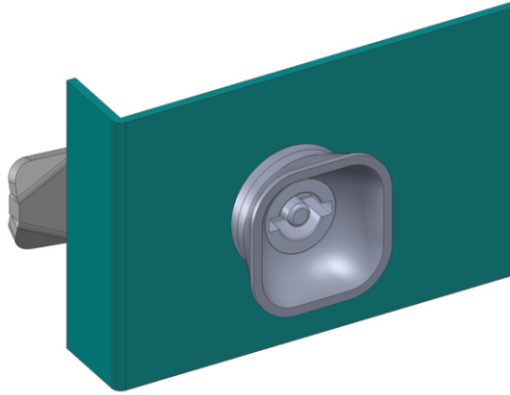
**KTDD**

YAYLI PANO KİLİDİ (DD Göbekli)  
QUARTER TURN WITH SPRING (DD Driver)

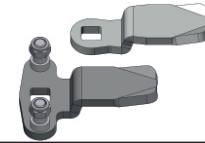
Göbekler için Sayfa: 2 - Tablo: B  
For drivers please check Page: 2 - Table: B



Geçiş Ölçüsü  
Cut Out



Dönme Açısı  
Rotation Angle



**Kullanım Alanları**

- \* Elektrik Panoları
- \* Makine Kapakları

**Malzeme**

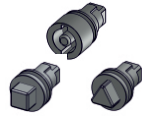
- \* 1: Gövde: Zamak  
DIN-EN 1774-ZnAl4Cu1
- 35: Gövde: Polyamide  
DIN-EN ISO 1043-1 PA6 GFR30
- \* 2: Kaplama: Krom
- 5: Kaplama: Boyalı
- 0: Kaplamasız
- \* Dil (CC): Çelik veya Plastik

**Applications**

- \* Electric Panels
- \* Machinery Covers

**Material :**

- \* 1: Body: Zamak  
DIN-EN 1774-ZnAl4Cu1
- 35: Body: Polyamide  
DIN-EN ISO 1043-1 PA6 GFR30
- \* 2: Finish: Chrome
- 5: Finish: Black Coated
- 0: Uncoated
- \* Cam (CC): Steel or PA6



Grup Kodu	Malzeme	Yüzey Kaplama	Dil Kodu	Koruma Derecesi
Group Code	Material	Finish	Cam Code	Ingress Protection Rating
<b>KTDD</b> Göbekler için Sayfa: 2 - Tablo: B For drivers please check Page: 2 - Table: B	.1	.2	.CC Diller için Sayfa: 1 - Tablo: 1/2/3 For cams please check Page: 1 - Table: 1/2/3	.0
	.35	.5		.1
		.0		0: Yok / No 1: IP65
	1: Zamak	2: Krom / Chrome 5: S. Boyalı / Black Coated		
	35: Polyamide	0: Kaplamasız / Uncoated		