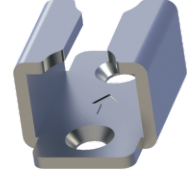


**ILK01.2.1**

**İSPANYOLET LAMA KİLİTLEYİCİSİ (Sac)**  
DUAL ROLLER CATCHER (Steel)



**Malzeme**

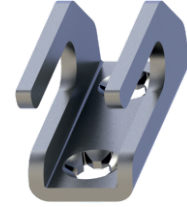
\* Çelik

**Material**

\* Steel

**ILK05.2.1**

**İSPANYOLET LAMA KİLİTLEYİCİSİ (Sac)**  
DUAL ROLLER CATCHER (Steel)



**Malzeme**

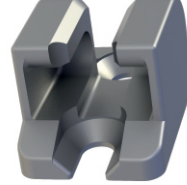
\* Çelik

**Material**

\* Steel

**ILK02.1.1**

**İSPANYOLET LAMA KİLİTLEYİCİSİ (Zamak)**  
DUAL ROLLER CATCHER (Zamak)



**Malzeme / Material**

\* Zamak DIN-EN 1774-ZnAl4Cu1

**ILK02.35.0**

**İSPANYOLET LAMA KİLİTLEYİCİSİ (Plastik)**  
DUAL ROLLER CATCHER (Polyamide)

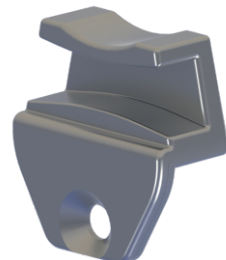


**Malzeme / Material**

\* Polyamide DIN-EN ISO 1043-1 PA6 GFR 30

**ILK04.1.1**

**İSPANYOLET LAMA KİLİTLEYİCİSİ (Zamak)**  
DUAL ROLLER CATCHER (Zamak)



**Malzeme**

\* 1: Gövde: Zamak  
DIN-EN 1774-ZnAl4Cu1  
\* 1: Kaplama: Çinko

**Material**

\* 1: Body: Zamak  
DIN-EN 1774-ZnAl4Cu1  
\* 1: Finish: Zinc