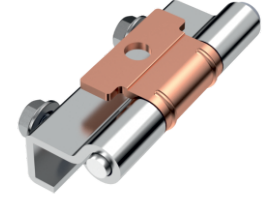


### MG05.2.1.V1.1

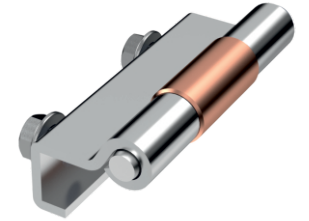
GİZLİ PANO MENTEŞESİ (Sac - Civatalı)  
CONCEALED HINGE (Steel - Bolt)



300Kg.

### MG05.2.1.V1.2

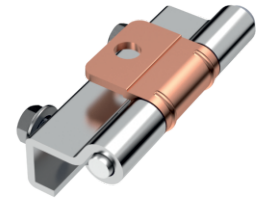
GİZLİ PANO MENTEŞESİ (Sac - Civatalı)  
CONCEALED HINGE (Steel - Bolt)



300Kg.

### MG05.2.1.V1.4

GİZLİ PANO MENTEŞESİ (Sac - Civatalı)  
CONCEALED HINGE (Steel - Bolt)



300Kg.

#### **Kullanım Alanları**

- \* Elektrik Panoları
- \* Makine Kapakları

#### **Malzeme**

- \* Gövde: St 37 Çelik Levha
- \* Ara Parça: St 37 Çelik
- \* Civata: Çelik St 37
- \* Gövde Kaplama: Çinko
- \* Ara Parça Kaplama: Bakır Kaplama
- \* Menteşe Dönme Açısı: 105°

#### **Applications**

- \* Enclosures
- \* Machinery Covers

#### **Material**

- \* Body: Steel St 37
- \* Welding Part: Steel St 37
- \* Screw: Steel St 37
- \* Finish: Zinc Plated
- \* Welding Part: Copper Plated
- \* Hinge Rotation Angle: 105°