

### MP03.0.6.180

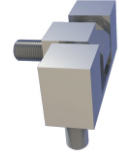
12mm BAĞLANTILI PANO MENTEŞESİ (Kaplamasız)  
12mm PANEL HINGE (Uncoated)



200Kg.

### MP03.2.6.180

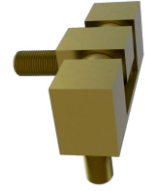
12mm BAĞLANTILI PANO MENTEŞESİ (Krom Kapl.)  
12mm PANEL HINGE (Chrome Plated)



200Kg.

### MP04.0.8.090

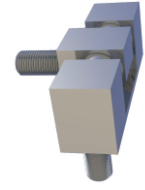
16mm BAĞLANTILI PANO MENTEŞESİ (Kaplamasız)  
16mm PANEL HINGE (Uncoated)



250Kg.

### MP04.2.8.090

16mm BAĞLANTILI PANO MENTEŞESİ (Krom Kapl.)  
16mm PANEL HINGE (Chrome Plated)



250Kg.

#### **Kullanım Alanları**

- \* Elektrik Panoları
- \* Makine Kapakları

#### **Malzeme**

- \* Gövde: Piriç  
DIN 17672 CuZn39Pb3
- \* Pim : Çelik
- \* 0: Kaplama: Kaplamasız
- \* 2: Kaplama: Krom
- \* Menteşe Dönme Açısı  
MP03:180° / MP04:90°

#### **Applications**

- \* Electric Panels
- \* Machinery Covers

#### **Material**

- \* Body: Brass  
DIN 17672 CuZn39Pb3
- \* Pin: Steel
- \* 0: Finish: Uncoated
- \* 2: Finish: Chrome
- \* Hinge Rotation Angle  
MP03:180° / MP04:90°